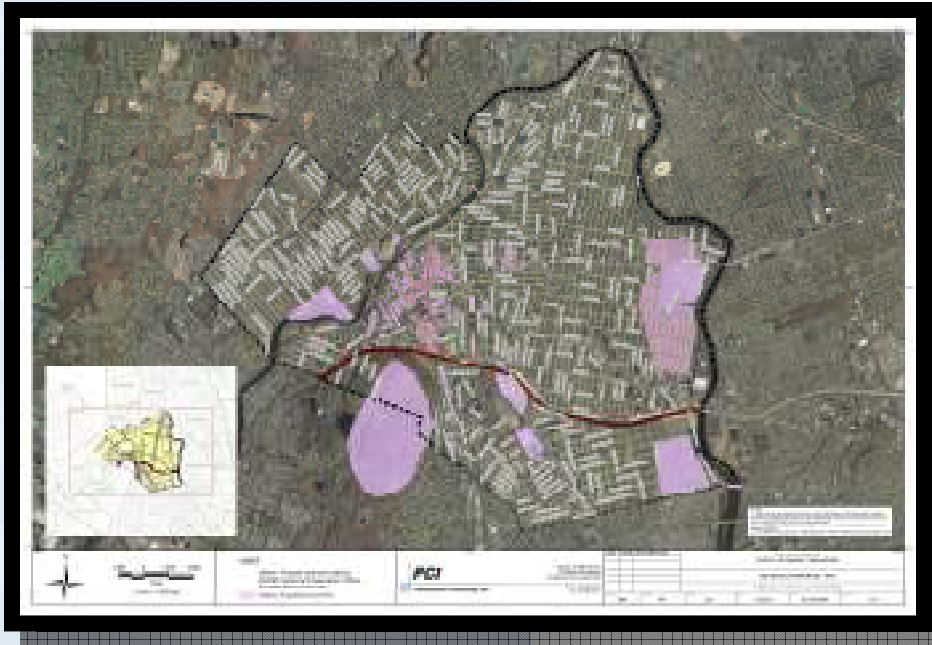


CITY OF PATERSON – GIS for Federal EDA Funding: Mapping Historic Properties



Design Data

Owner
City Of Paterson

■
Location
City of Paterson, Passaic
County, New Jersey

As part of a project involving an application for funding through the Federal Economic Development Agency or EDA, PCI prepared numerous including flood maps, land use and zoning maps and the mapping of historic properties.

The intent for submitting the application was obtain funding to complete a flood study to understand and ultimately alleviate flooding in the downtown business district. We mapped in GIS format through creating event themes in ArcGIS data and added attribute data to GIS well layer through a variety of GIS data administration and analysis tasks such as spatial table joins and queries by attributes and location.

PCI
Professional Consulting, Inc.

Consulting Engineers