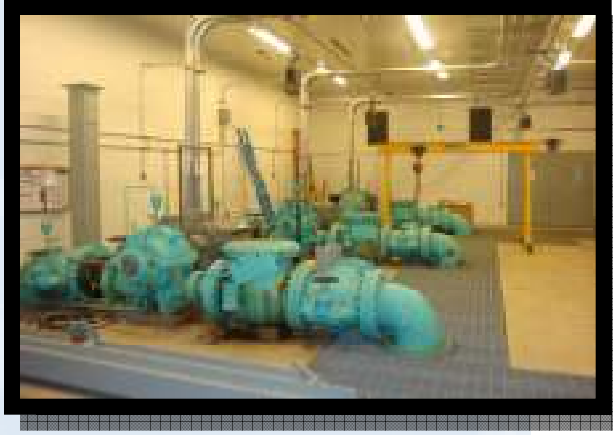


Commerce Street Pumping Station Town of Mount Pleasant Westchester County, New York



Design Data

Owner

Town of Mount Pleasant

Location

Mount Pleasant, New York

Total Project Cost

\$1.8 Million

Project Features

Three 16" Direct Drive Pumps

Emergency Back-up Generator

pH control and corrosion control

SCADA system

This project involved full time construction management on site and in the office for the construction of a 8 MGD water supply pump station. In addition to the site and building work, new chemical treatment facilities for disinfection, pH control and corrosion control were constructed within the facility. The project also included wireless communication and installation of SCADA system.

PCI provided design during construction and full time construction management on this multiple prime contract, both in the field and in the office.



PCI
Professional Consulting, Inc.

Consulting Engineers