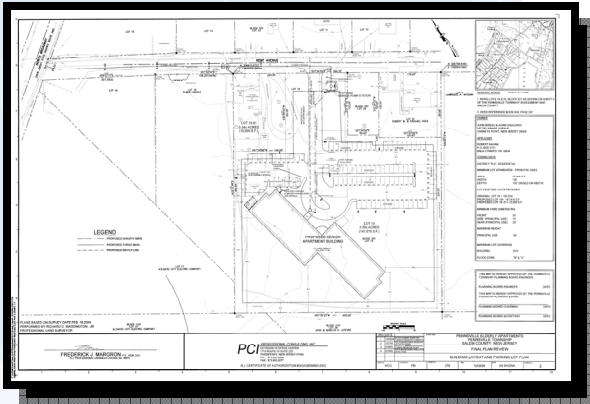


# Kent Avenue Elderly Apartments Land Development



**PCI**  
**Professional Consulting, Inc.**



## **Design Data**

### **Client**

Tara CM

### **Location**

11 Kent Avenue,  
Pennsville, NJ

### **Total Project Cost**

2.4 million

### **Project Features**

4.4 Acre development

102 Vehicle Lighted  
Parking Facility with  
Drop-off

Bus Stop

Garden and Picnic  
Area

PCI prepared the land development package for Board approval as well as the civil design, contract drawings and the specifications for this apartment complex of one bedroom affordable apartments for active independent senior living. The apartments feature 1 bedroom pet friendly apartments with elevators, garden, social room, and laundry facilities inside of a newly built state-of-the-art apartment building. PCI designed the site layout, drainage, lighting and coordinated utilities including power, water, sewer, and gas for the complex.

**Consulting Engineers**