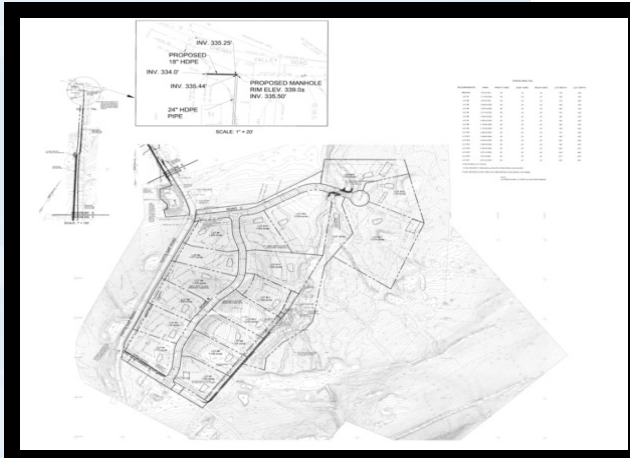


# Wolf Hollow at Water Gap Country Club



## Design Data

**Owner**  
Wolf Hollow at Water Gap Country Club

**Location**  
Water Gap, Pennsylvania

**Total Project Cost**  
\$ 1,000,000.00

**Project Features**  
17 – “one acre lot”  
Subdivision

New storm drainage structures.

New road design and  
New utilities

This subdivision required that two detention ponds be designed to meet the no net increase in the run off policy. Pond No. 1 is located on the western side and Pond No. 2 on the eastern side. Two swales were proposed to carry the surface runoff from the post development site to the detention basins. On the western side of the development a swale was installed parallel to Totts Gap Road. This affectively intercepts surface runoff from the western side of the subdivision.

PCI staff employed Land Development Desktop software to prepared the site design/layout, cut and fill calculations, drainage design, roadway design, and permit packages.

Our services included engineering design for the roadway and drainage, assistance in the bidding of the project, and construction supervision and administration while the project was under construction.



**PCI**  
**Professional Consulting, Inc.**

**Consulting Engineers**